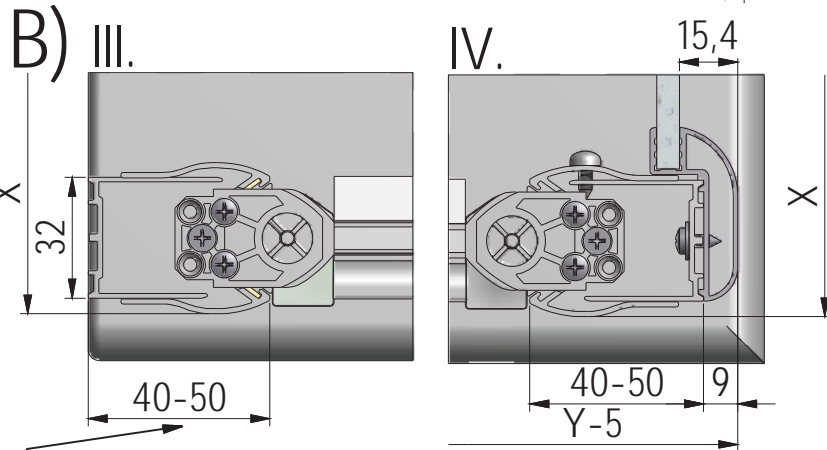
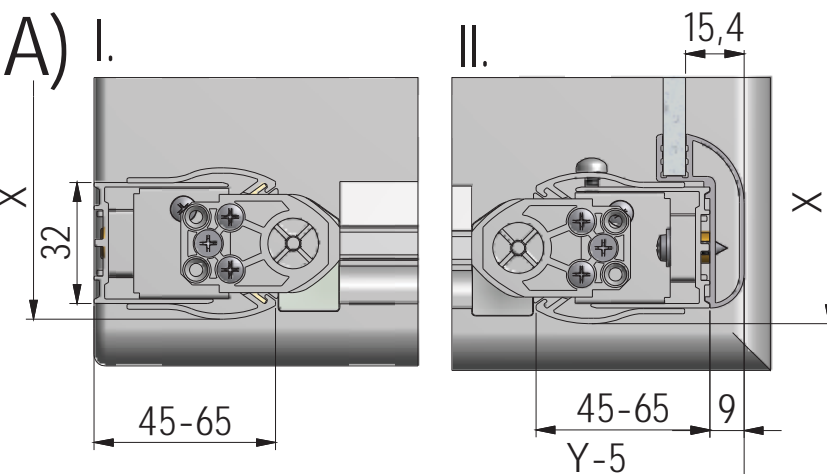
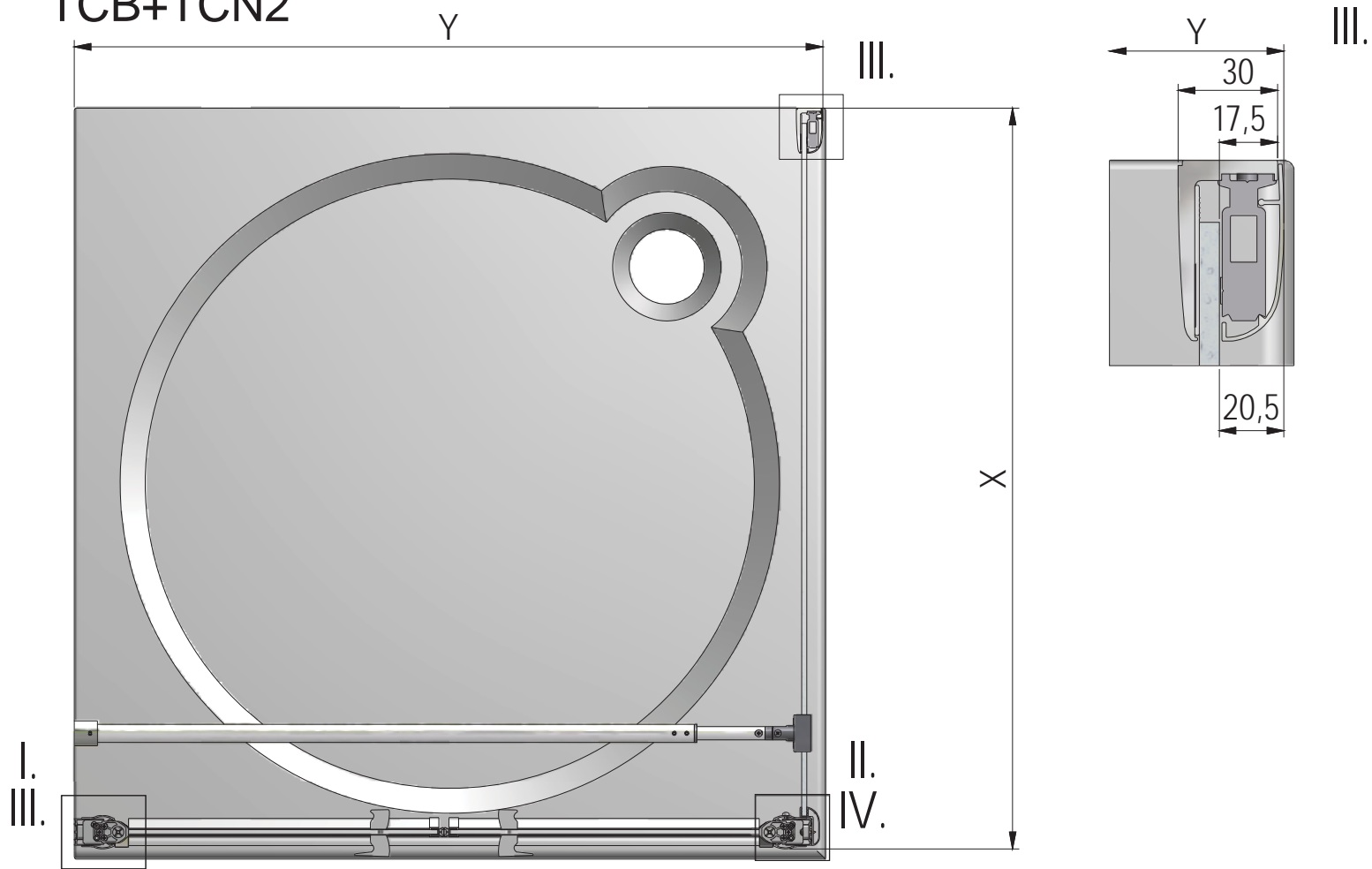


TCB+TCN2

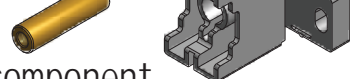
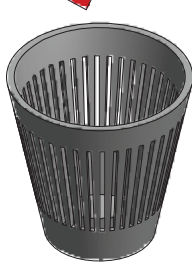


Roltechnik a.s.; Czech Republic, 56933 Třebořov 160,
tel.:+420 461 324 301/302, fax: +420 461 324 297,
<http://www.roltechnik.com>; e-mail: objednavky@roltechnik.cz

TCB+TCN2



	X (mm)		Y (mm)	
	MIN	MAX	MIN	MAX
800	775	800	795	835
900	875	900	895	935
1000	975	1000	995	1035
1100	-	-	1095	1135
1200	-	-	1195	1235

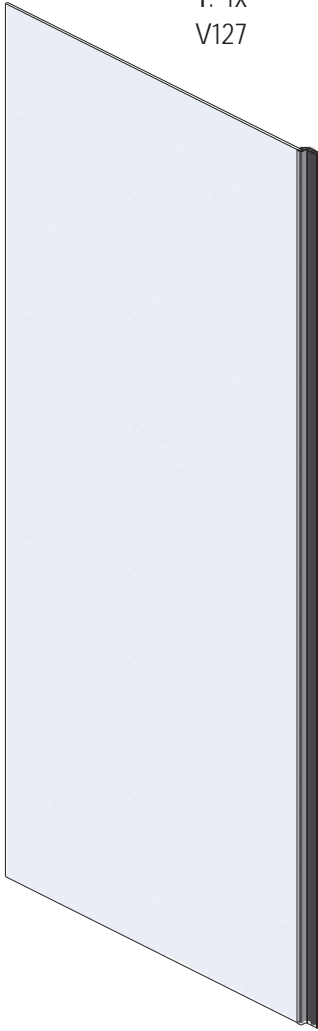
U minima montovat bez čepu a plastového komponentu.  

At a minimum installed without the pin and the plastic component.

Bei einem Minimum, ohne den Stift und der Kunststoffkomponente eingebaut.

Au minimum installé sans la broche et le composant en matière plastique.

1. 1x
V127



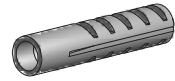
3. 1x



4. 1x
P32



6. 4x
M0511
Ø6



7. 4x
M0811
3,9x38



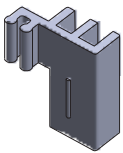
8. 4x
M5974



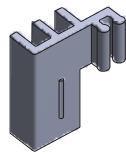
9. 4x
M5975



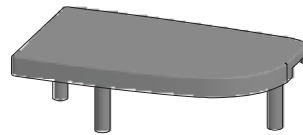
10. 4x
M5924



11. 4x
M5925



25. 1x
M5926



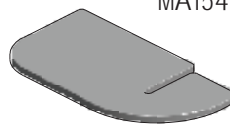
26. 1x
M5927



12. 1x
P2743



13. 1x
MA1548



14. 1x
MA1549

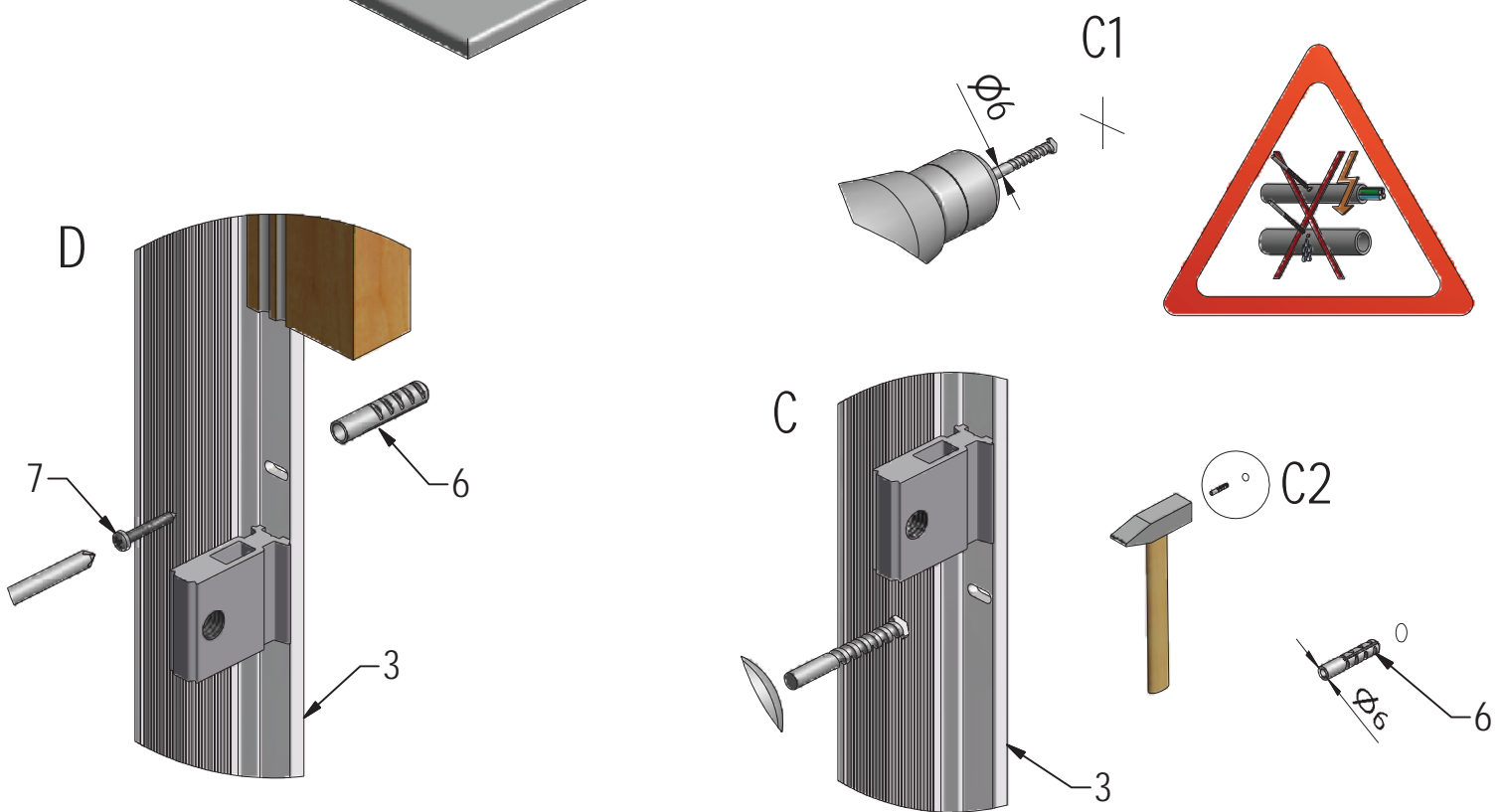
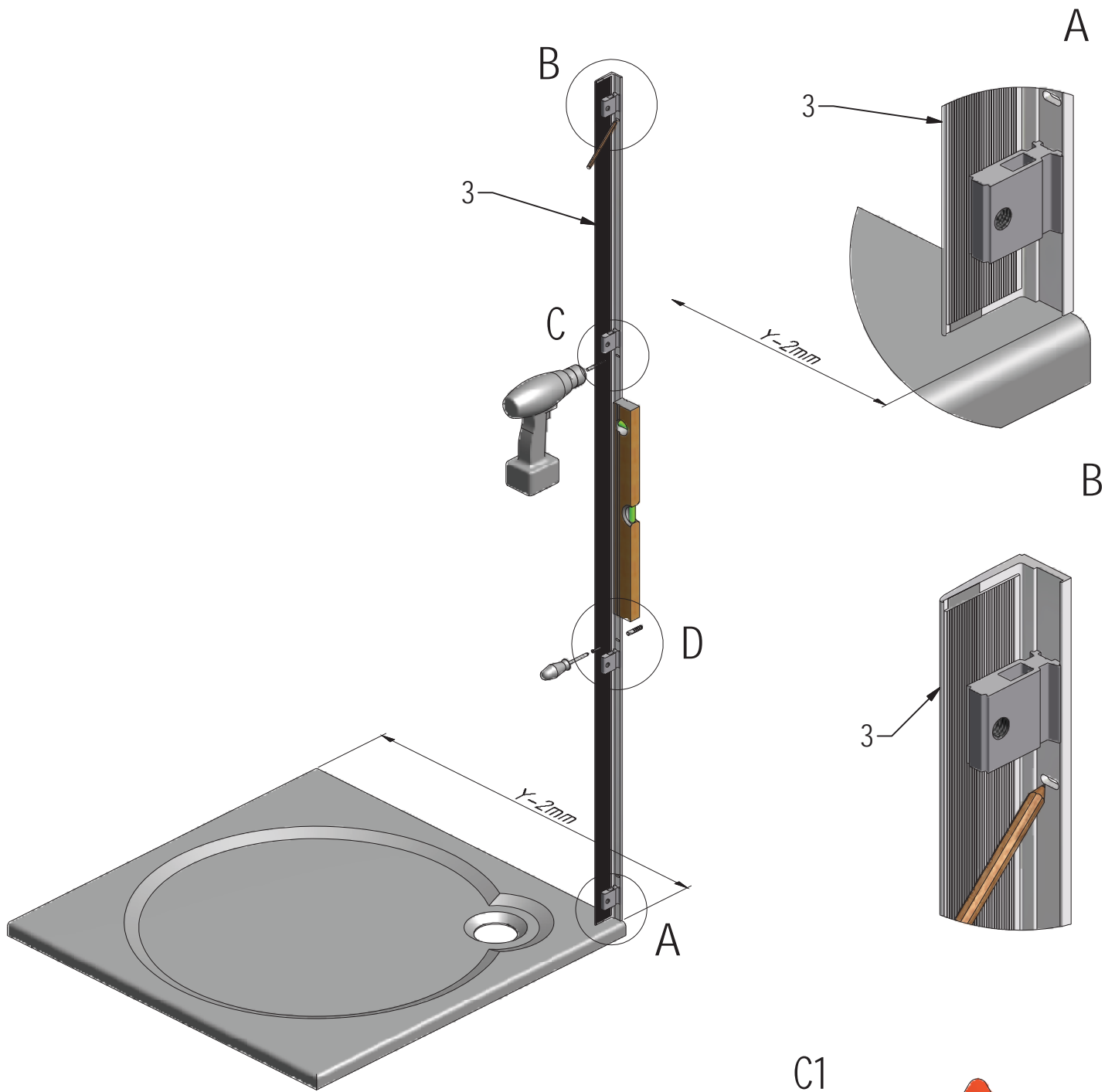


15. 6x
M0806

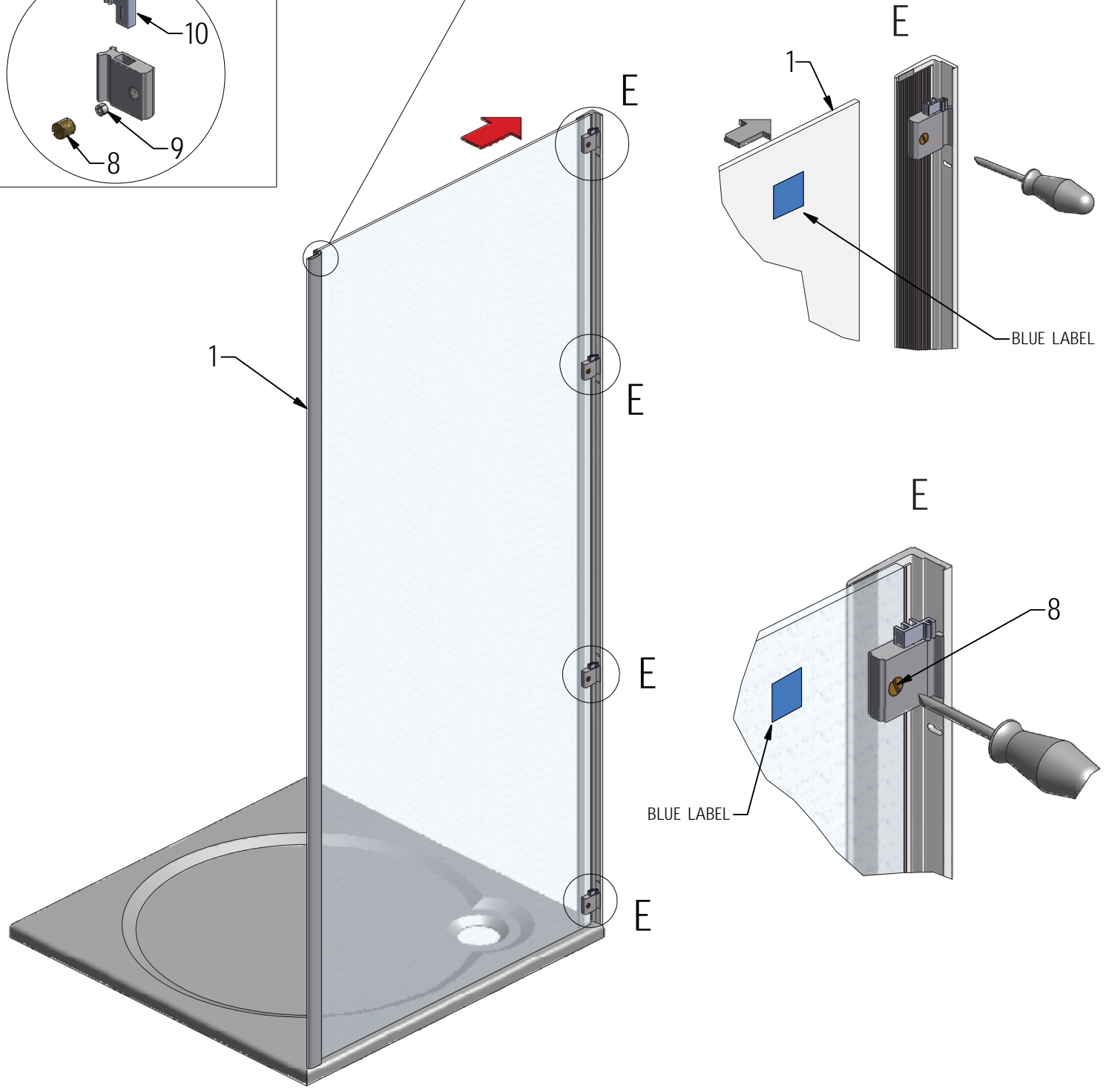
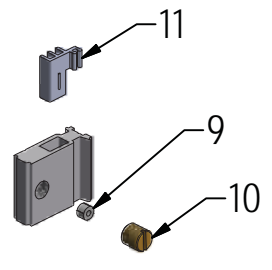
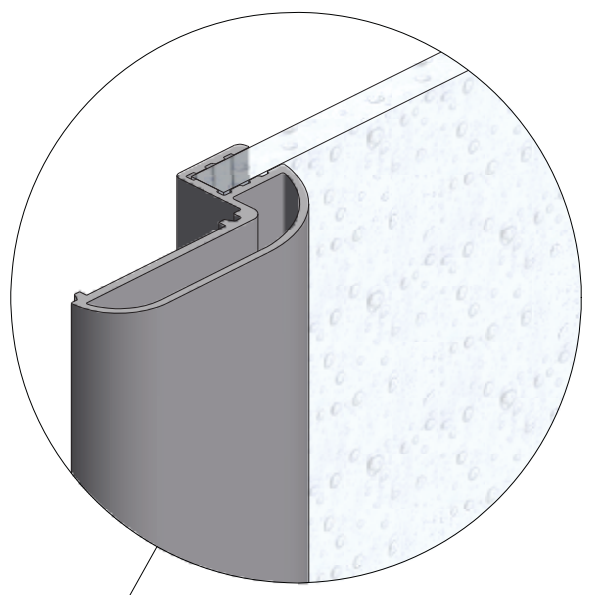
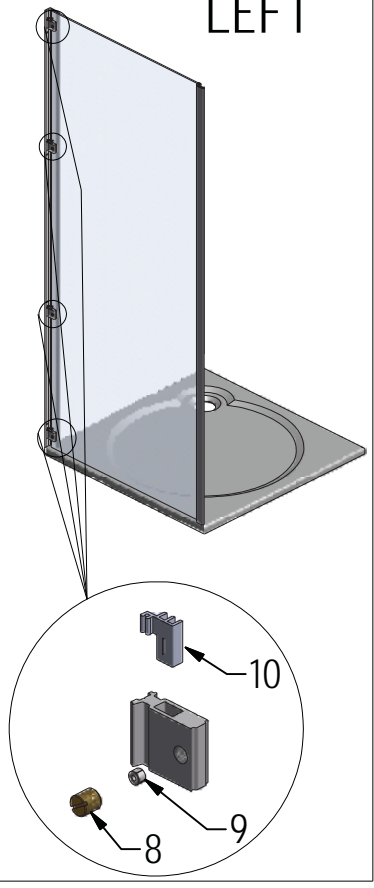


16. 4x
M0789

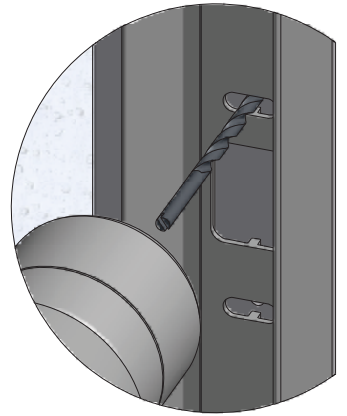




LEFT



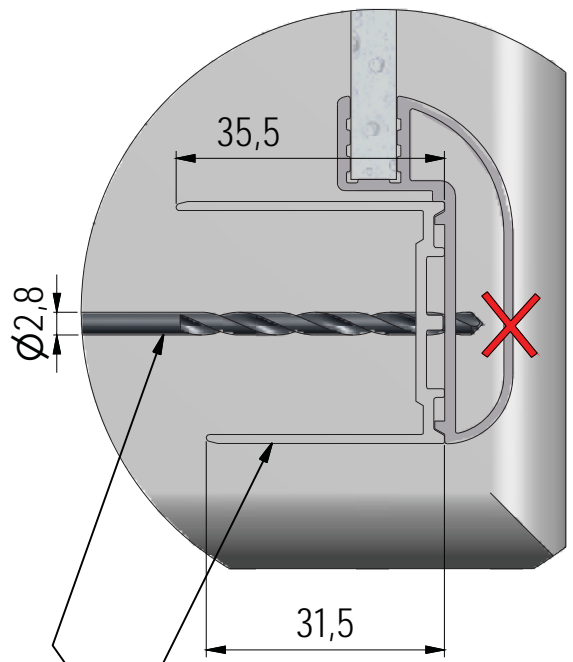
F (1 : 1,5)



F

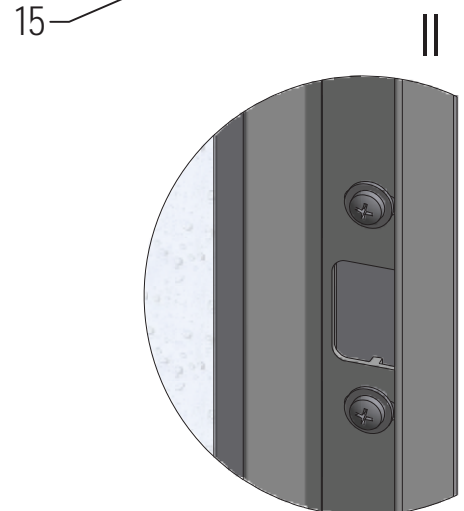
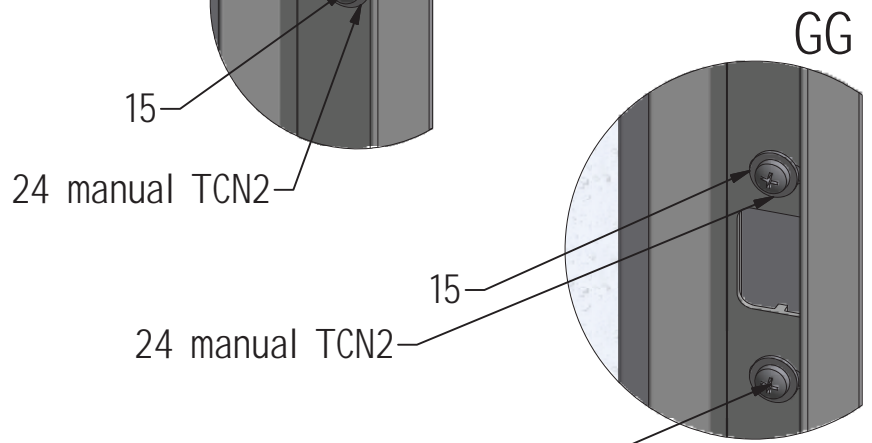
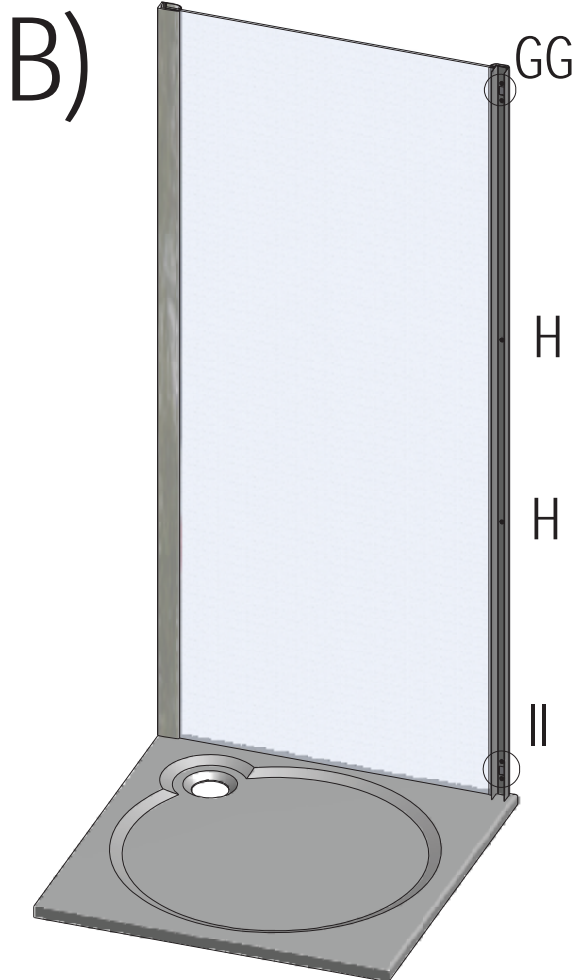
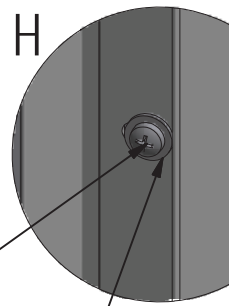
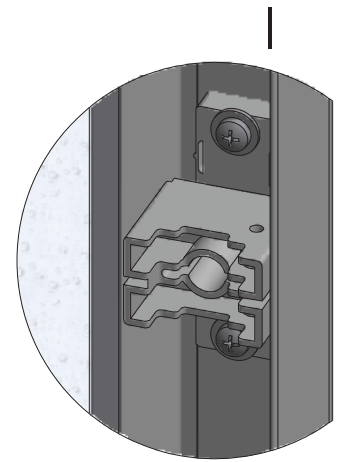
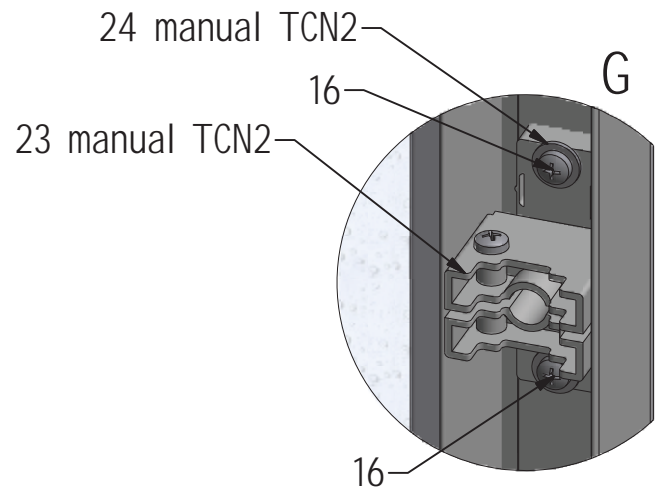
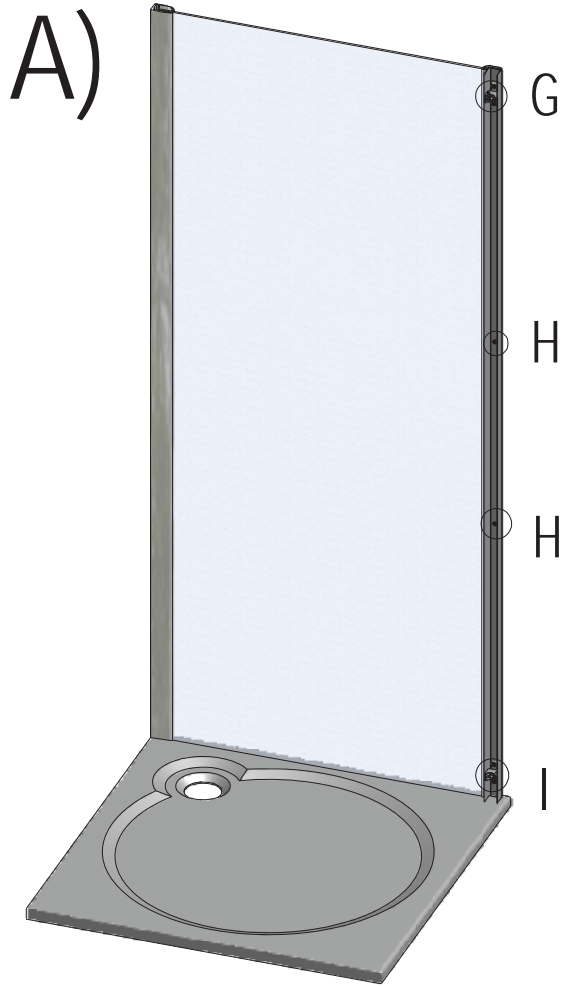
F (1 : 1)

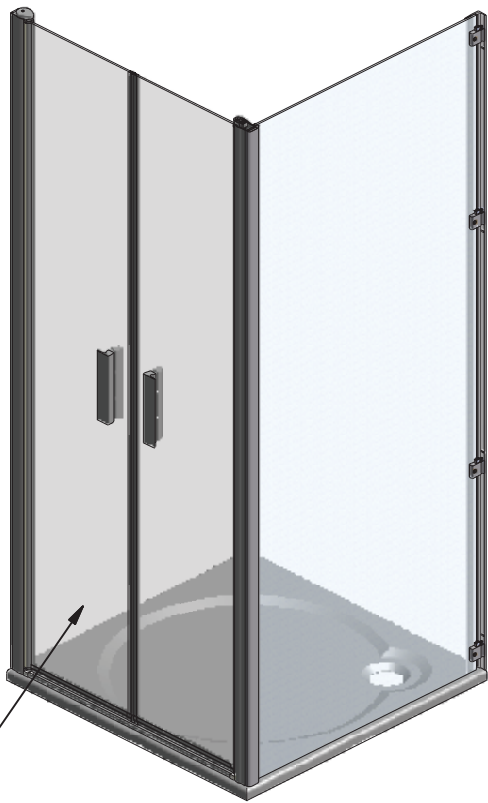
6x



3 manual TCN2

25 manual TCN2

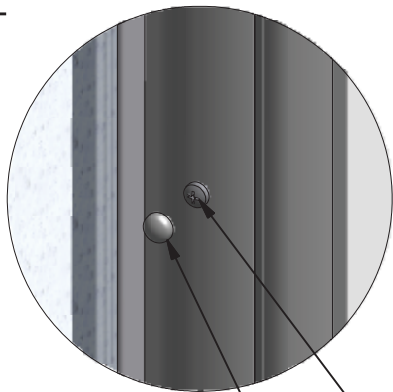




instruction manual TCN2



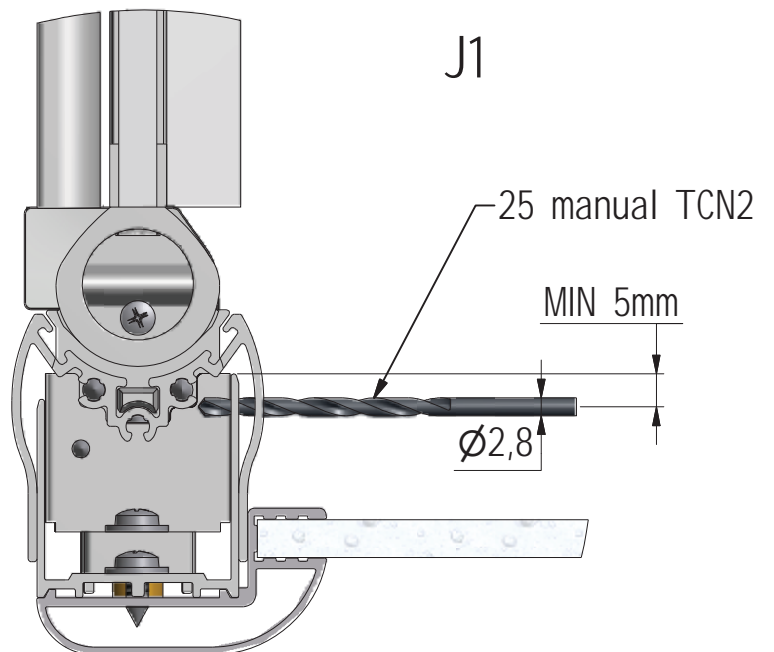
J2



26 manual TCN2

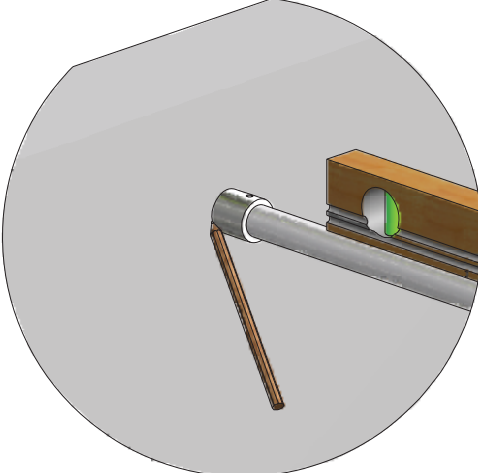
27 manual TCN2

J1

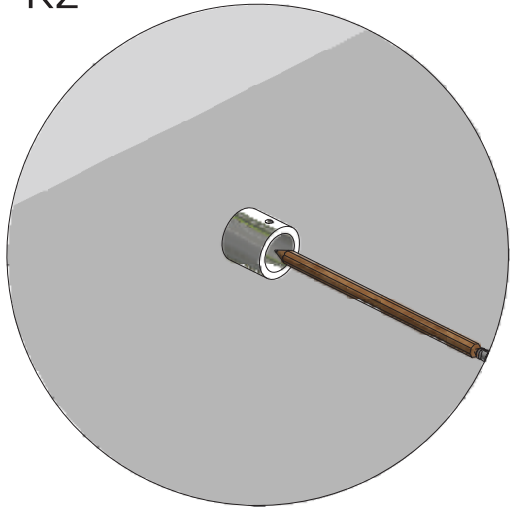




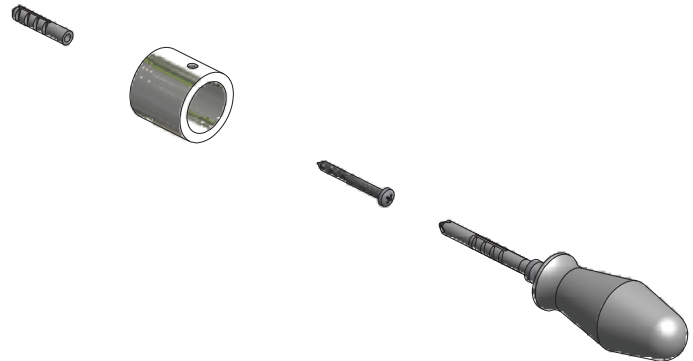
K1



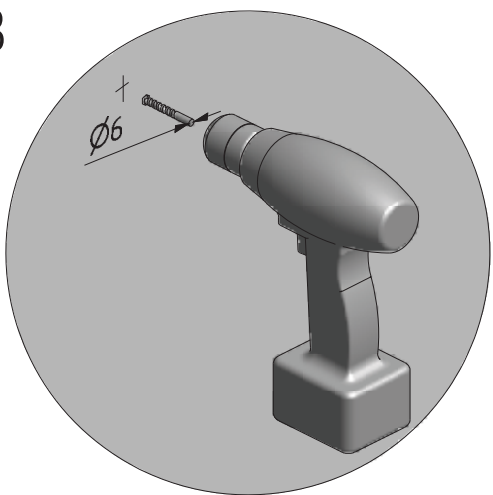
K2



K4

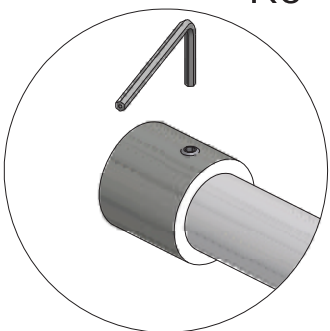


K3

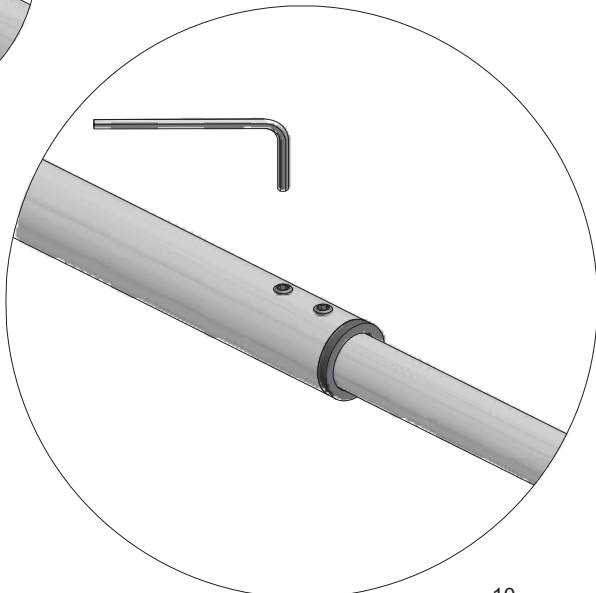




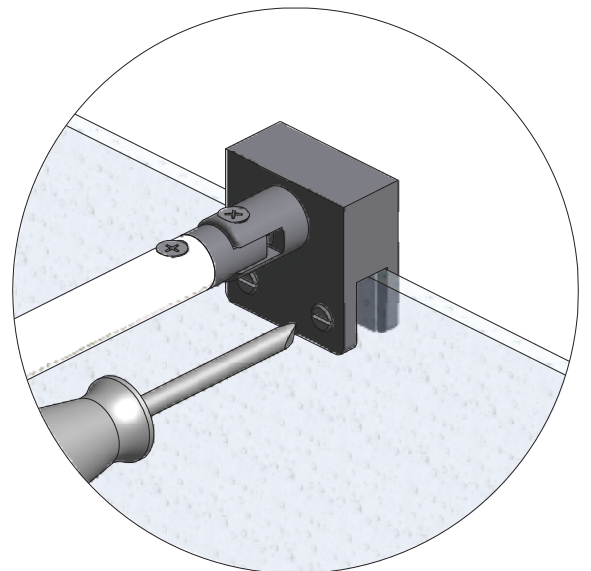
K5

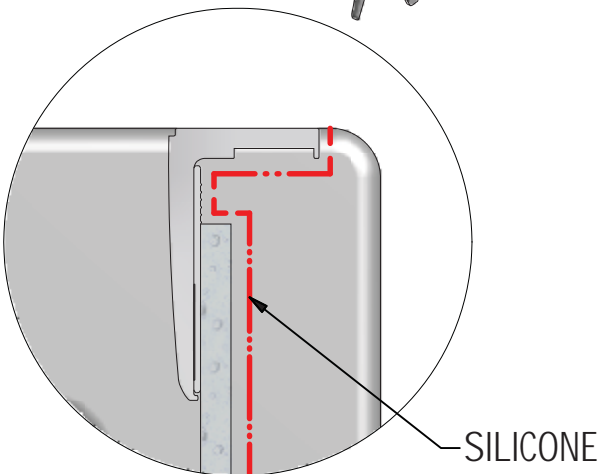
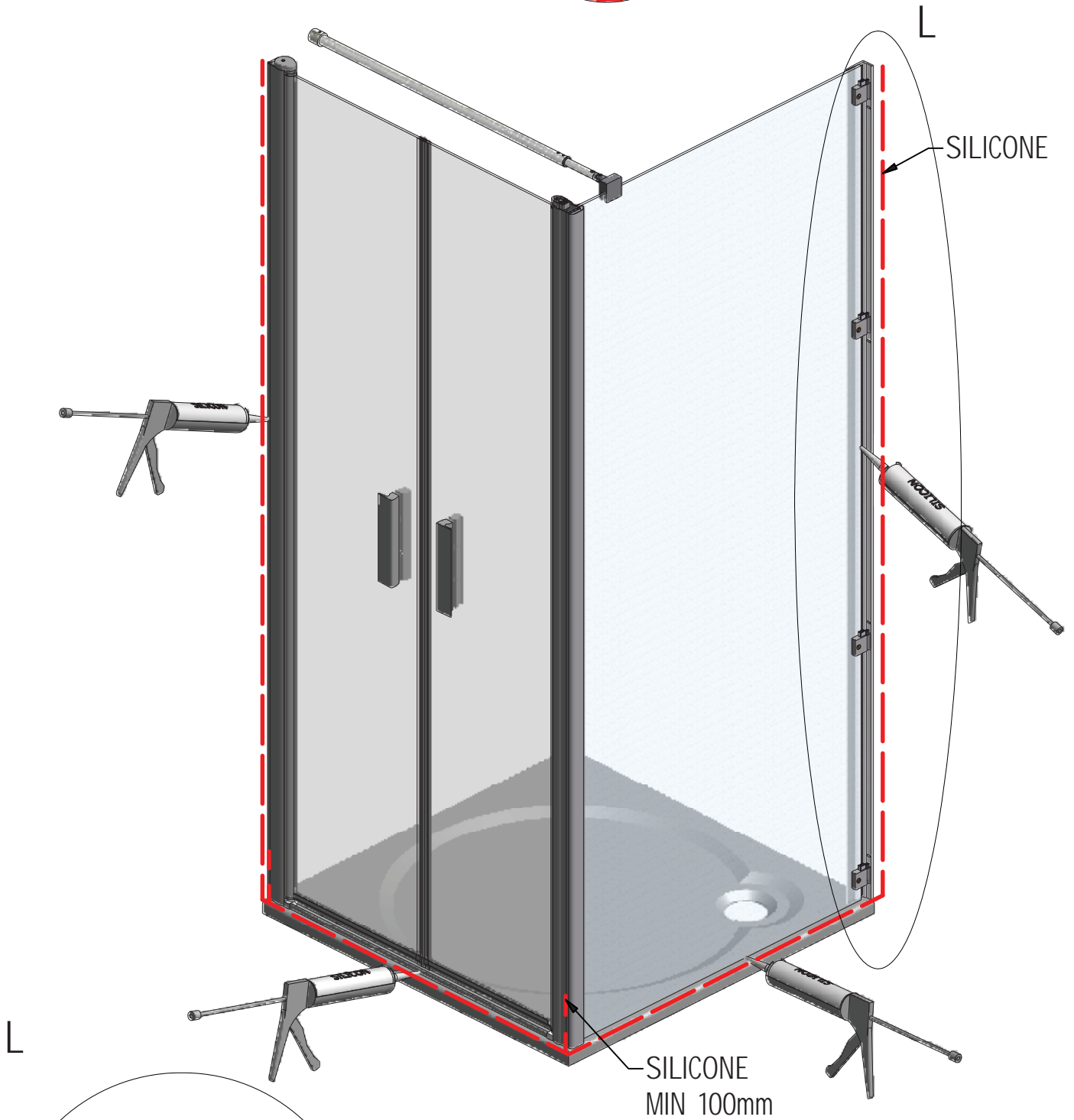


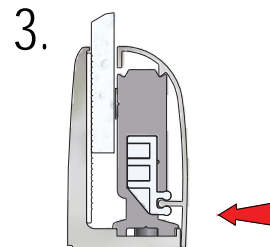
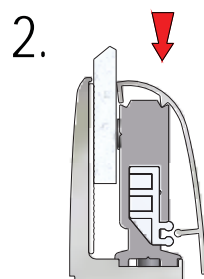
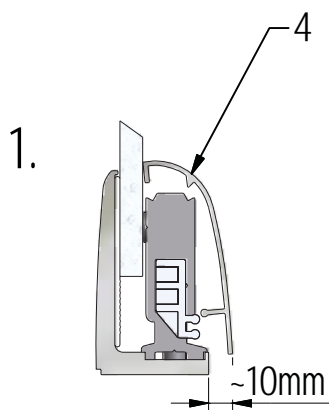
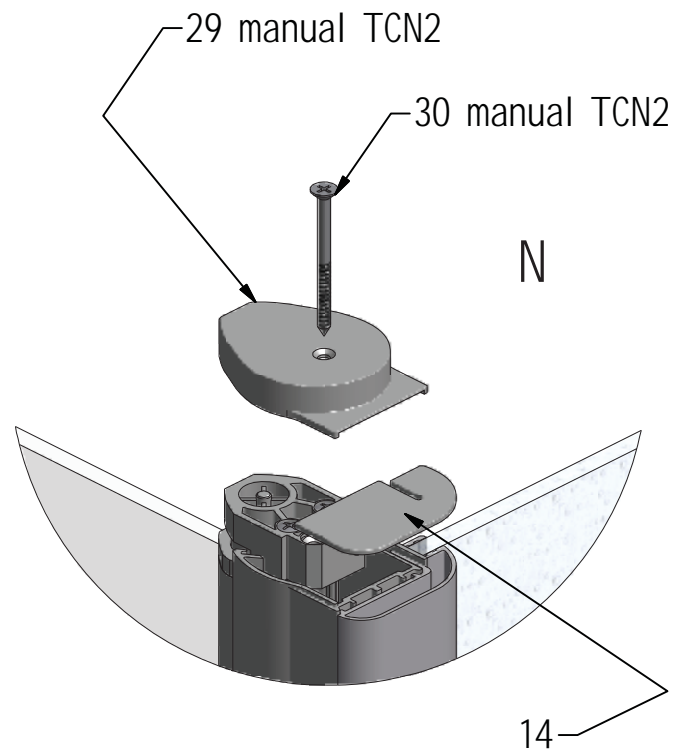
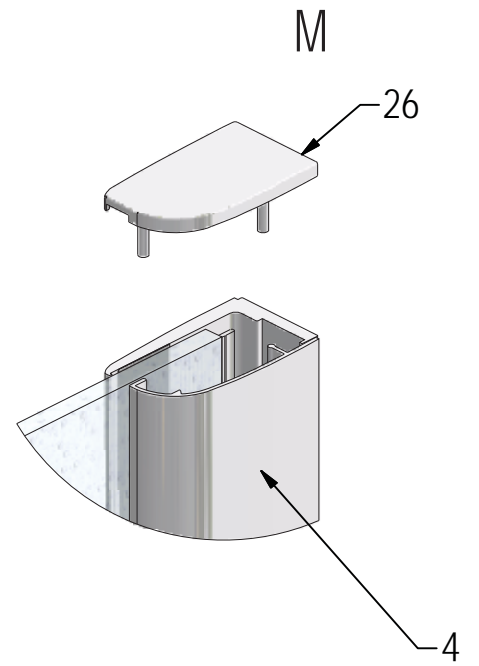
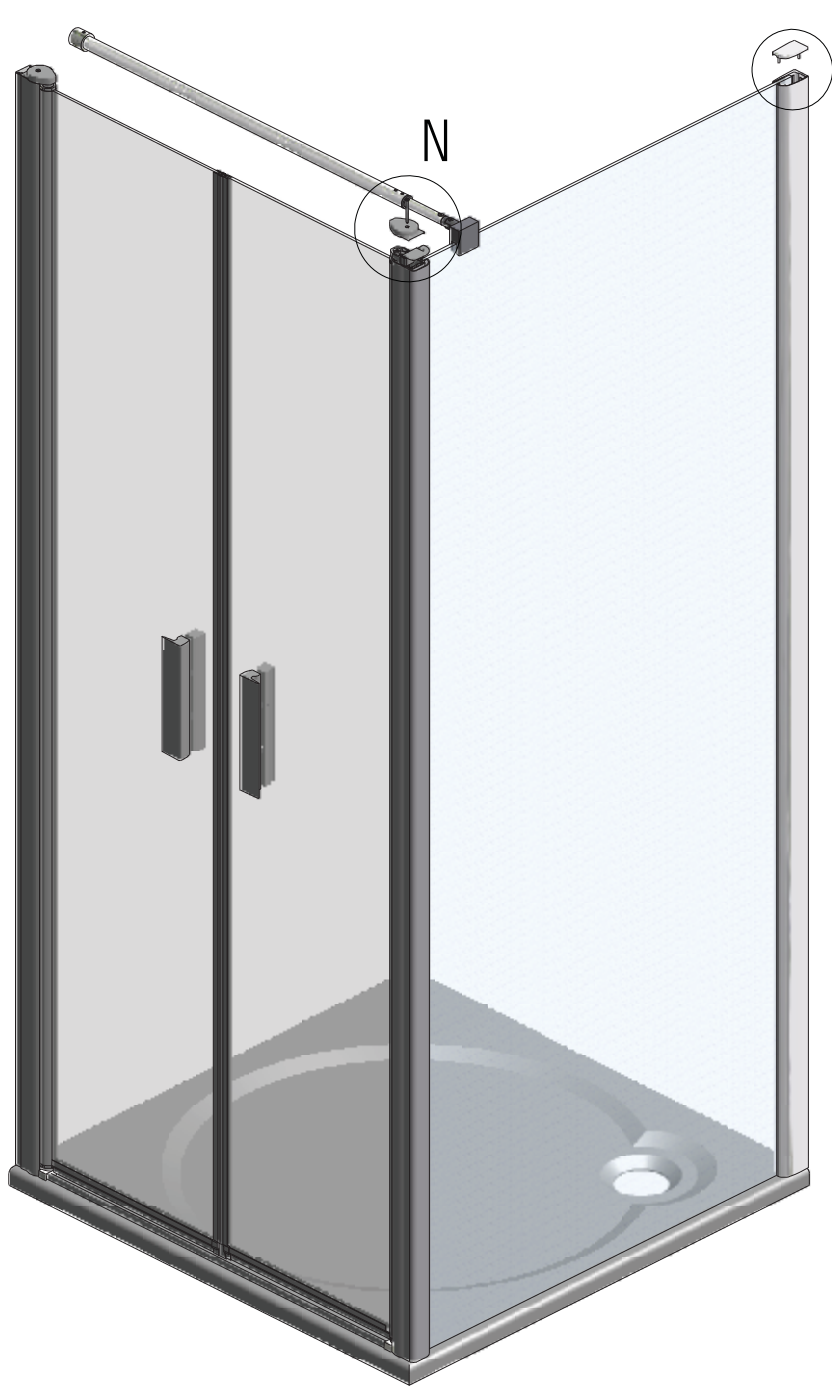
K6

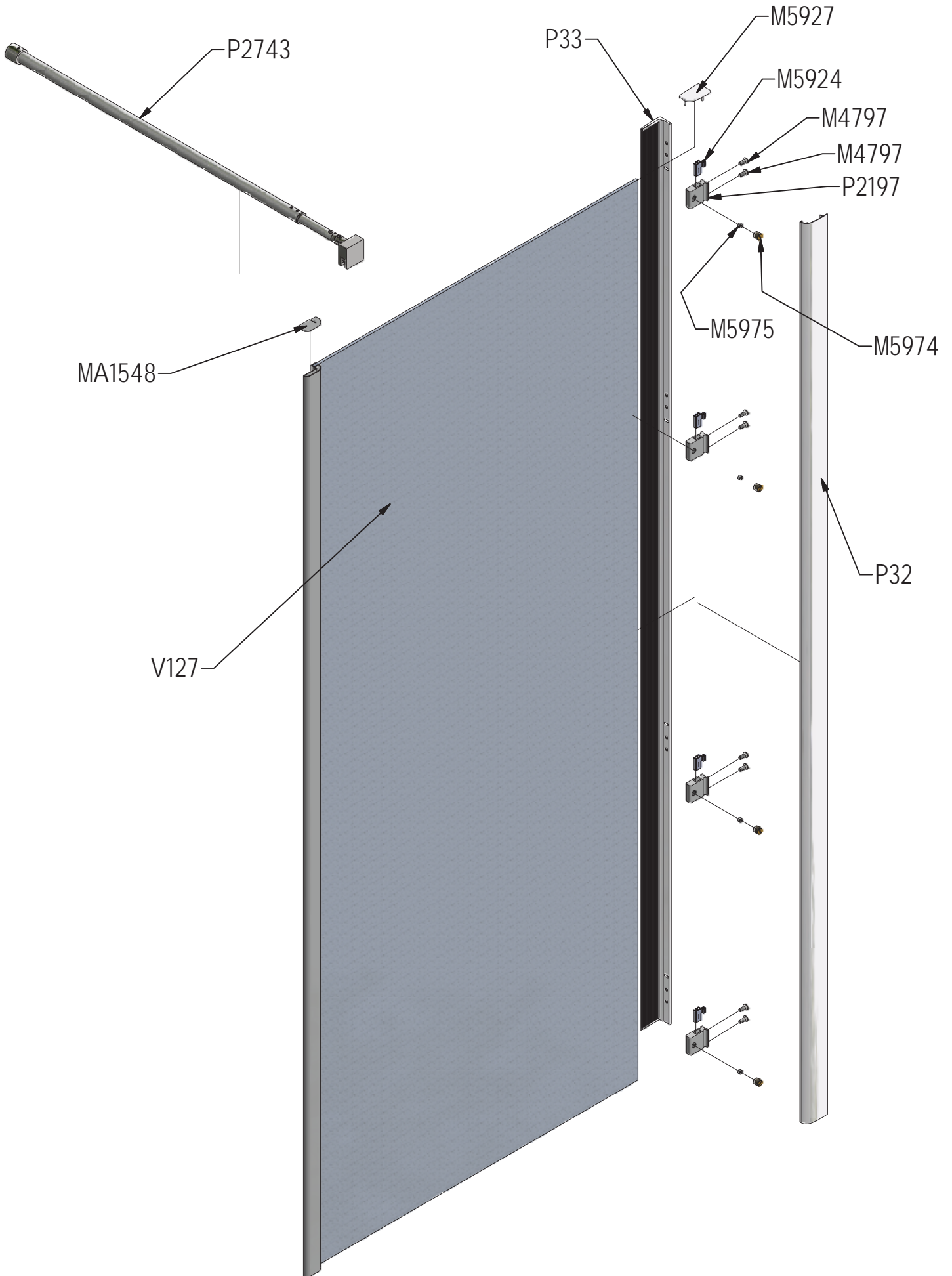


K7









V127	800	clear glass+brillant	ND03-0662-00-02
		clear glass+elox	ND03-0662-01-02
	900	clear glass+brillant	ND03-0663-00-02
		clear glass+elox	ND03-0663-01-02
	1000	clear glass+brillant	ND03-0664-00-02
		clear glass+elox	ND03-0664-01-02

P32		brilant	P2197
		elox	P2205

P33		brilant	ND01-0973-00
		elox	ND01-0973-01