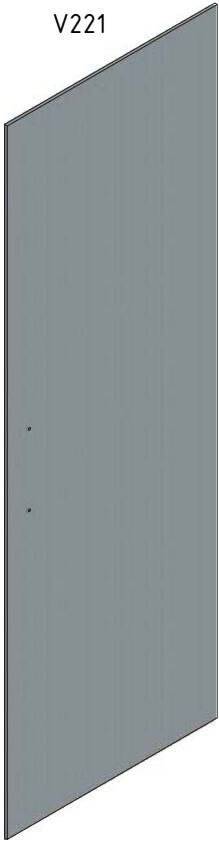


1. 1x  
V221



2. 1x  
V220



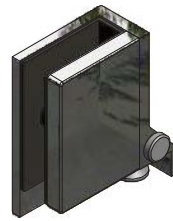
3. 1x LEFT  
MA7891



4. 1x RIGHT  
MA7890



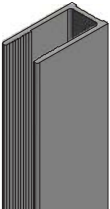
5. 1x LEFT  
MA7893



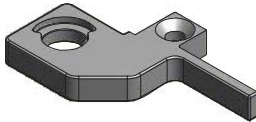
6. 1x RIGHT  
MA7892



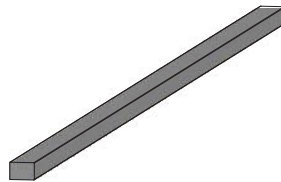
7. 1x  
MA7187



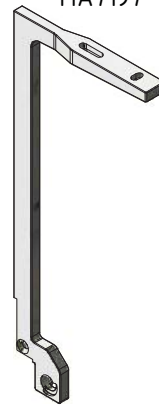
8. 1x  
MA7198



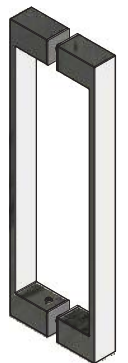
9. 1x  
MA7203



10. 1x  
MA7197



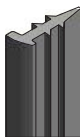
11. 1x  
MA7196



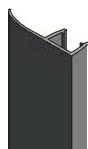
12. 1x  
MA7185



13. 1x  
MA7186



14. 1x  
MA7193

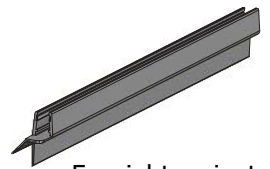


15. 1x  
MA7195



For left variant

16. 1x  
MA7194



For right variant

17. 1x  
MA7209



18. 1x  
MA7211



USE ONLY FOR  
GDO1N+GDO1N  
VARIANT

19. 2x  
MA7210



20. 1x  
MA7215



21. 5x  
M0511



22. 5x  
M0811



23. 4x  
M0827

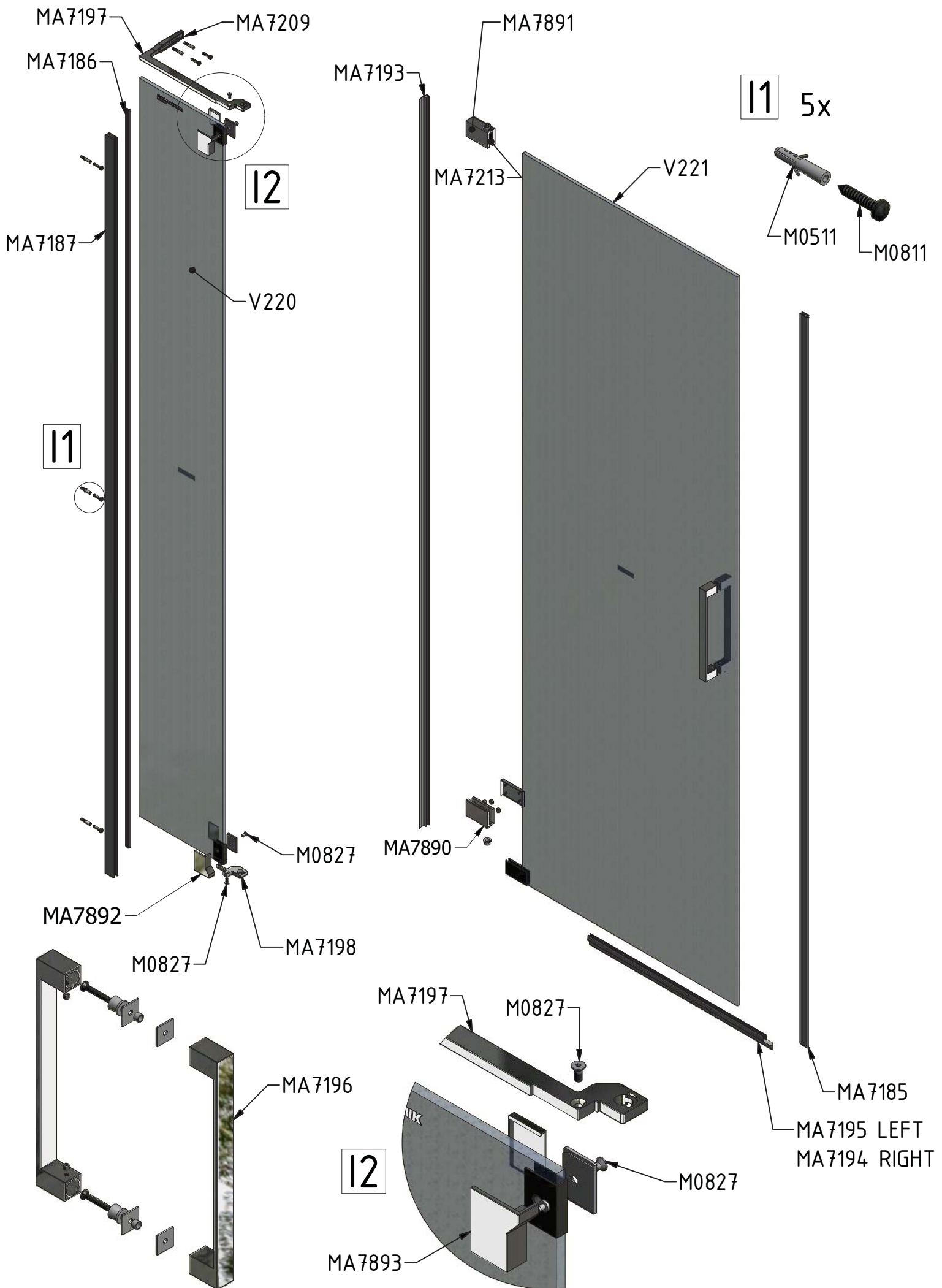


24. 2x  
MA7222



25. 2x  
MA7224





V220	800;900;1000;1100;1200	Transparent	ND01-3621
V221	800	Transparent	ND01-3622
	900		ND01-3623
	1000		ND01-3624
	1100		ND01-3625
	1200		ND01-3626