

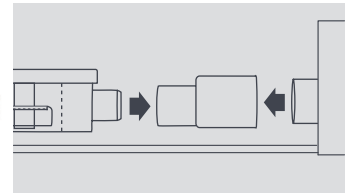
EN

# Connectors

## Mini Pump

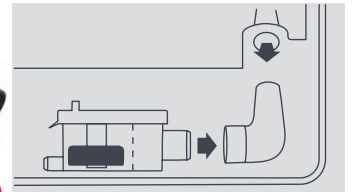
### RUBBER ADAPTOR TO CONNECT A DUCTED UNIT TO A MINI PUMP

OPTIONS				
Ducted AC outlet OD	Reservoir Pump OD	Ideal Use	Part No.	Pack Qty
20mm	16mm	Fits Mitsu Heavy	FP2001	3
25mm	16mm	Daikin, Mitsu Elec/Heavy, Panasonic, LG	FP2002	3
32mm	16mm	Daikin, Mitsu Elec/Heavy, Panasonic, LG	FP2003	3



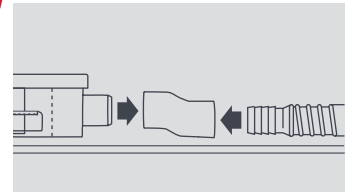
### 90° LONG ARM BEND TO CONNECT A WALL MOUNT TO MINI PUMP RESERVOIR

OPTIONS				
Drip tray outlet OD	Reservoir Pump OD	Ideal Use	Part No.	Pack Qty
12mm	16mm	LG wall mount and floor mount	FP2006	3
16mm	16mm	Wall mount and floor mount	FP2056	3



### OFFSET CONNECTOR FOR A WALL MOUNT TO MINI PUMP RESERVOIR

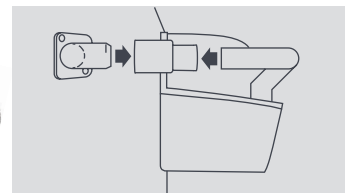
OPTIONS				
Drip tray outlet OD	Reservoir Pump OD	Ideal Use	Part No.	Pack Qty
16mm	16mm	Can be used universally	FP1024	5



## Tank Pump

### RUBBER ADAPTOR TO CONNECT A CASSETTE UNIT CONDENSATE DRAIN PIPE TO A TANK PUMP

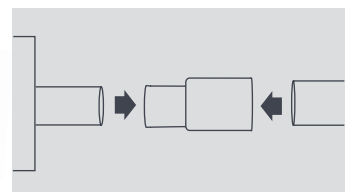
OPTIONS				
Cassette outlet OD	Overflow pipe OD	Ideal Use	Part No.	Pack Qty
16mm	21mm	Fits LG units	FP2011	3
26mm	21mm	Daikin, Panasonic	FP2012	3
32mm	21mm	Daikin, Mitsu Elec/Heavy, Panasonic, LG	FP2013	3



## Pipe to Pipe

### RUBBER ADAPTOR TO CONNECT 21mm OVERFLOW PIPE TO WASTE PIPE

OPTIONS				
Overflow pipe OD	Waste pipe OD	Ideal Use	Part No.	Pack Qty
21mm	25mm	Reducing or enlarging pipe diameters	FP2016	3
21mm	32mm	Reducing or enlarging pipe diameters	FP2017	3
21mm	40mm	Reducing or enlarging pipe diameters	FP2018	3



Note: All connectors should be fitted with the relevant cable ties