

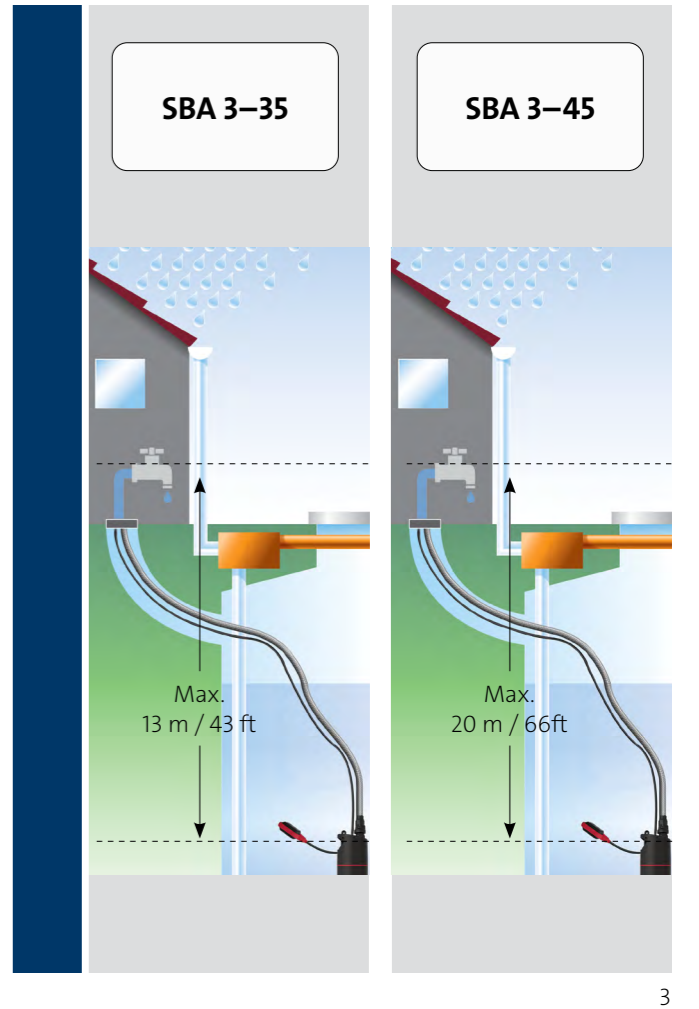
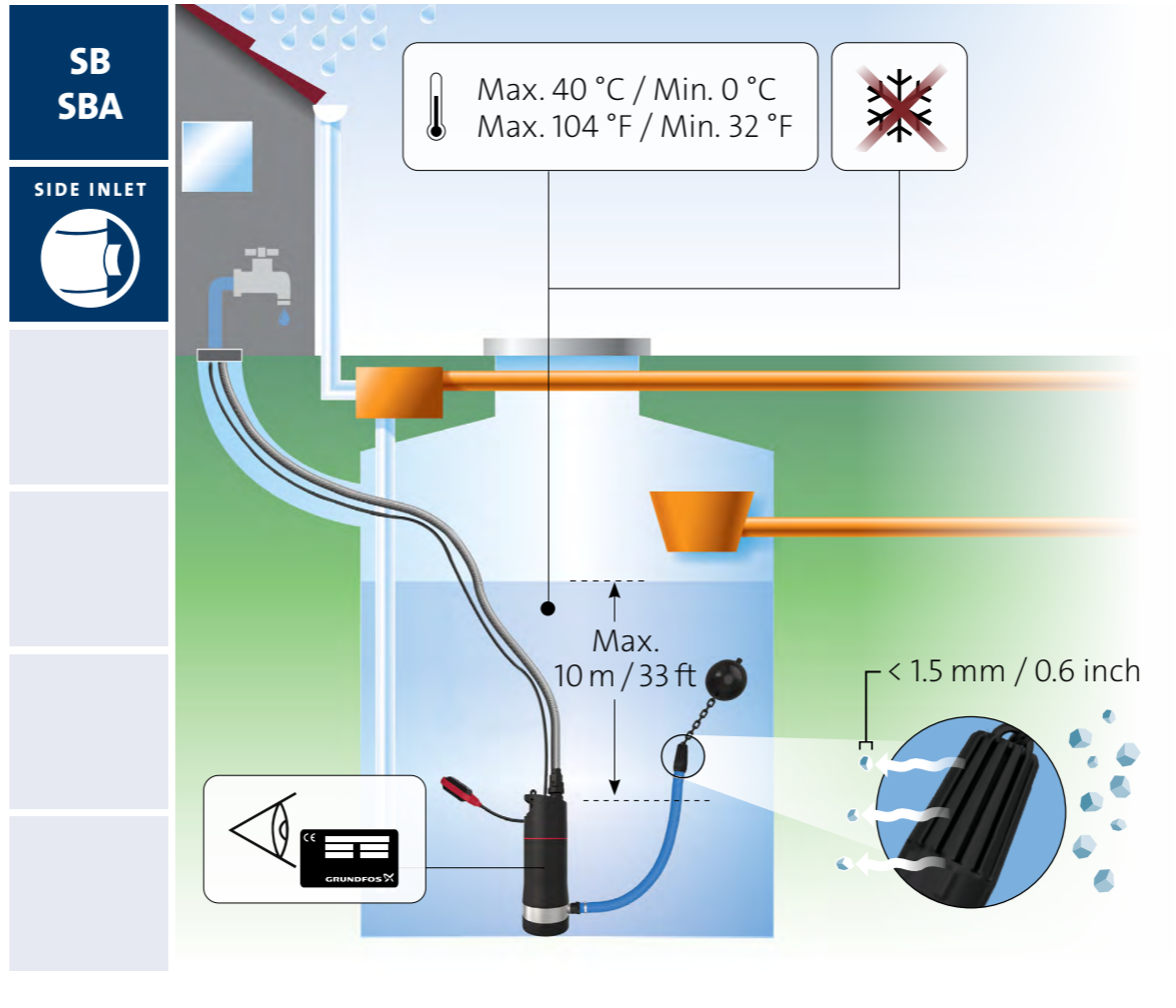
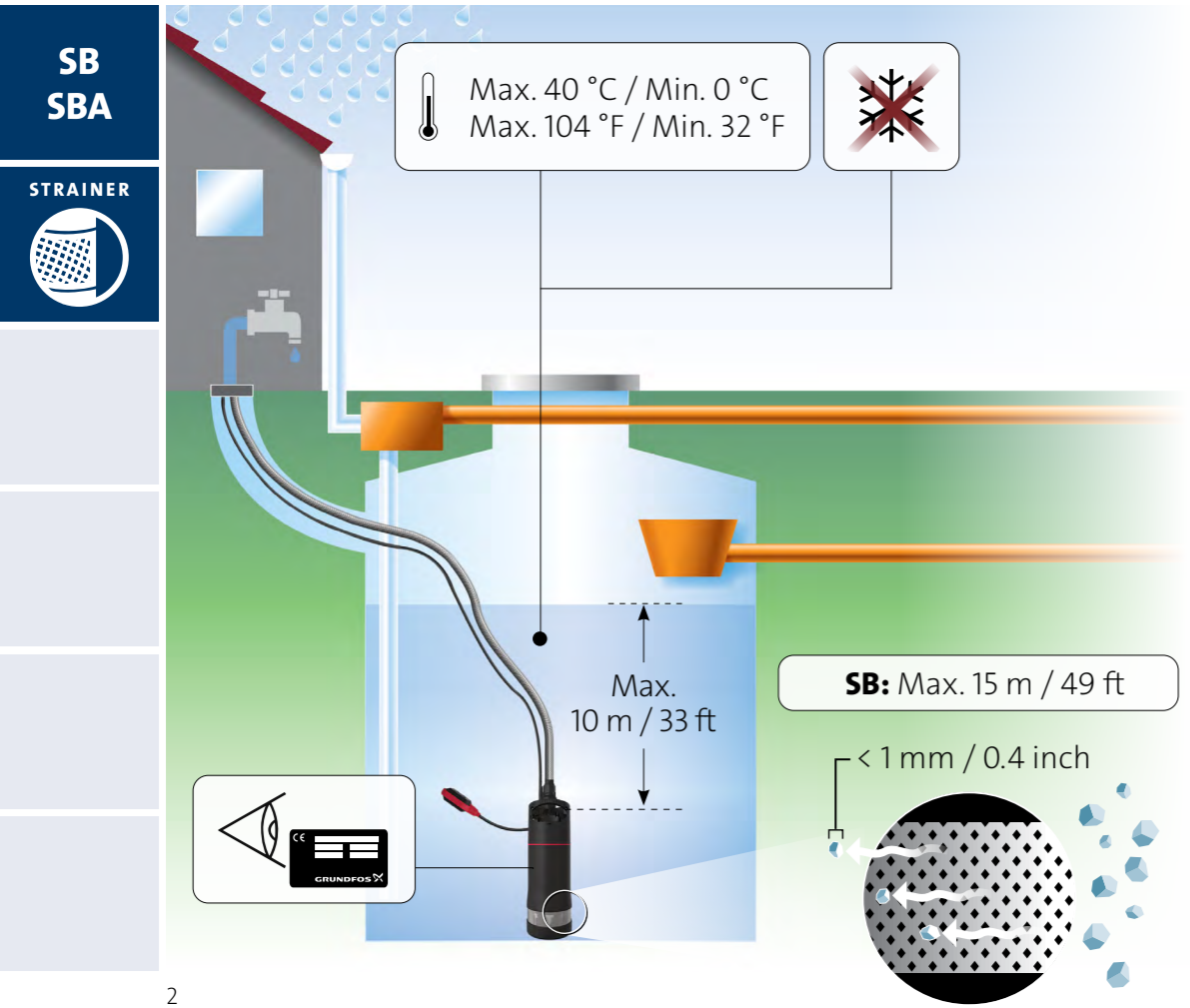
# SB/SBA



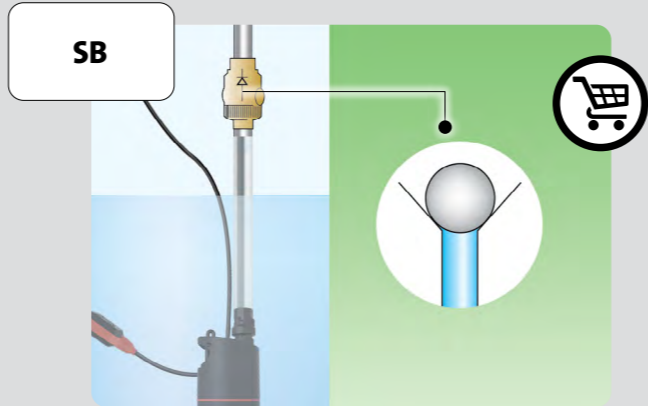
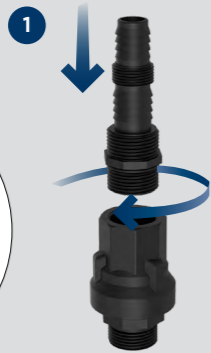
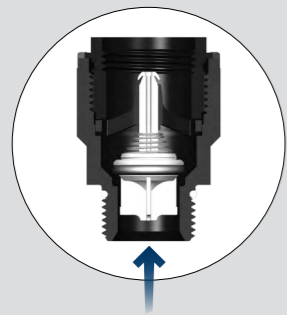
Further product  
documentation



[net.grundfos.com/qr/i/99057358](https://net.grundfos.com/qr/i/99057358)



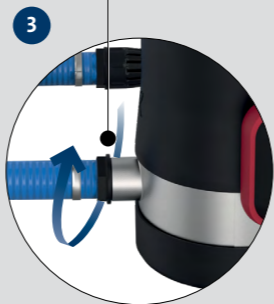
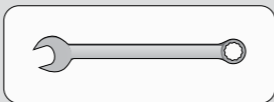
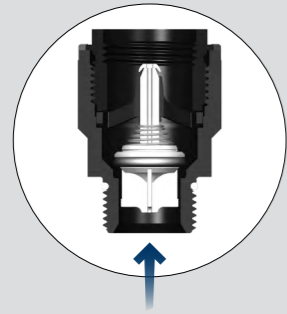
**SB**  
**STRAINER**



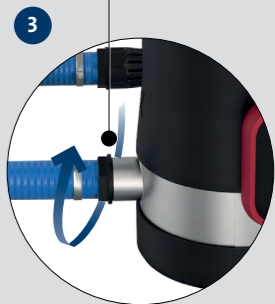
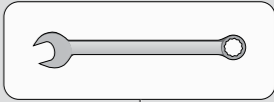
**SBA**  
**STRAINER**



**SB**  
**SIDE INLET**



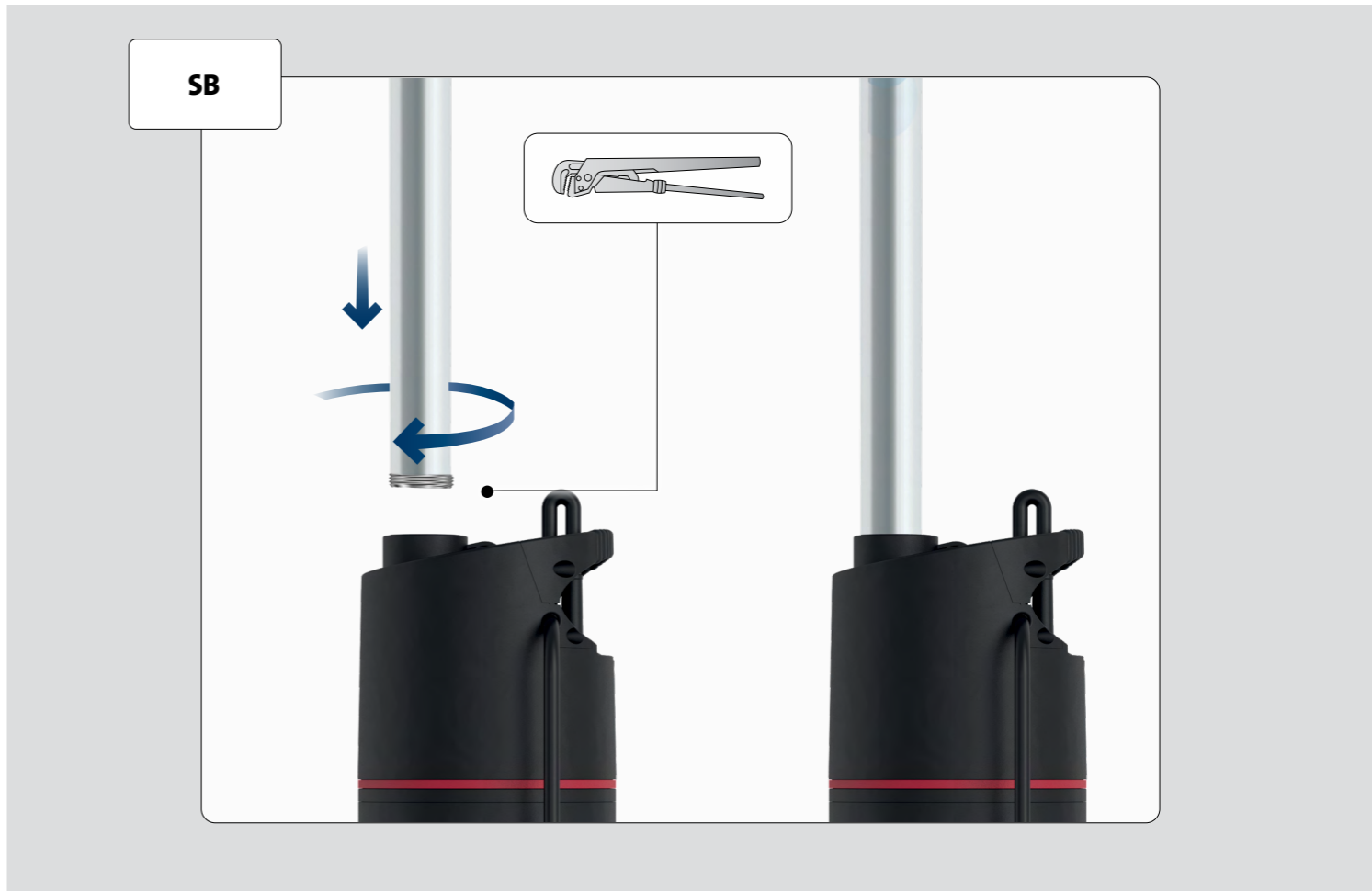
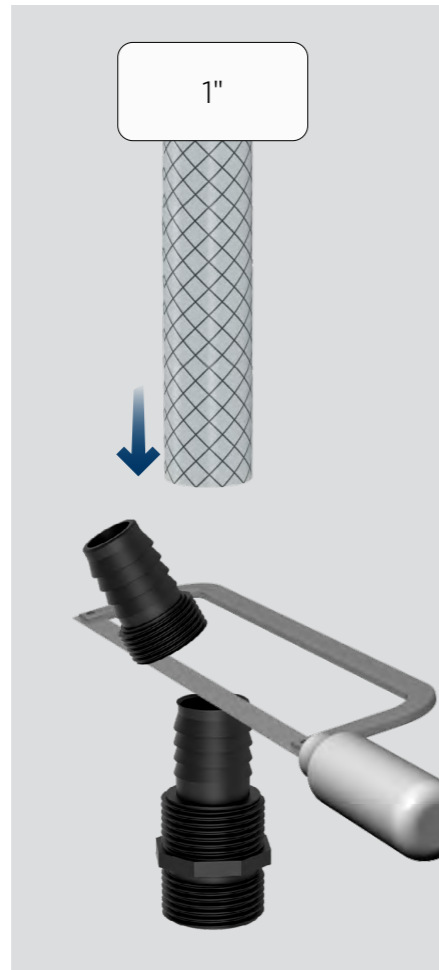
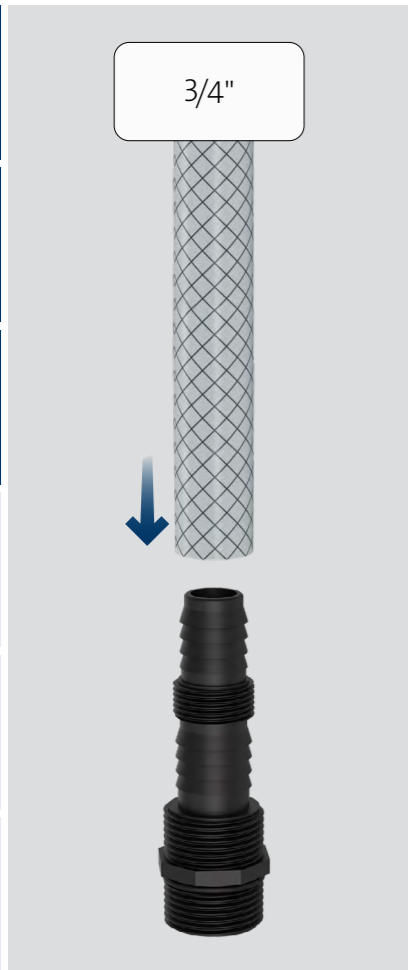
**SBA**  
**SIDE INLET**



**SB**  
**SBA**

STRAINER

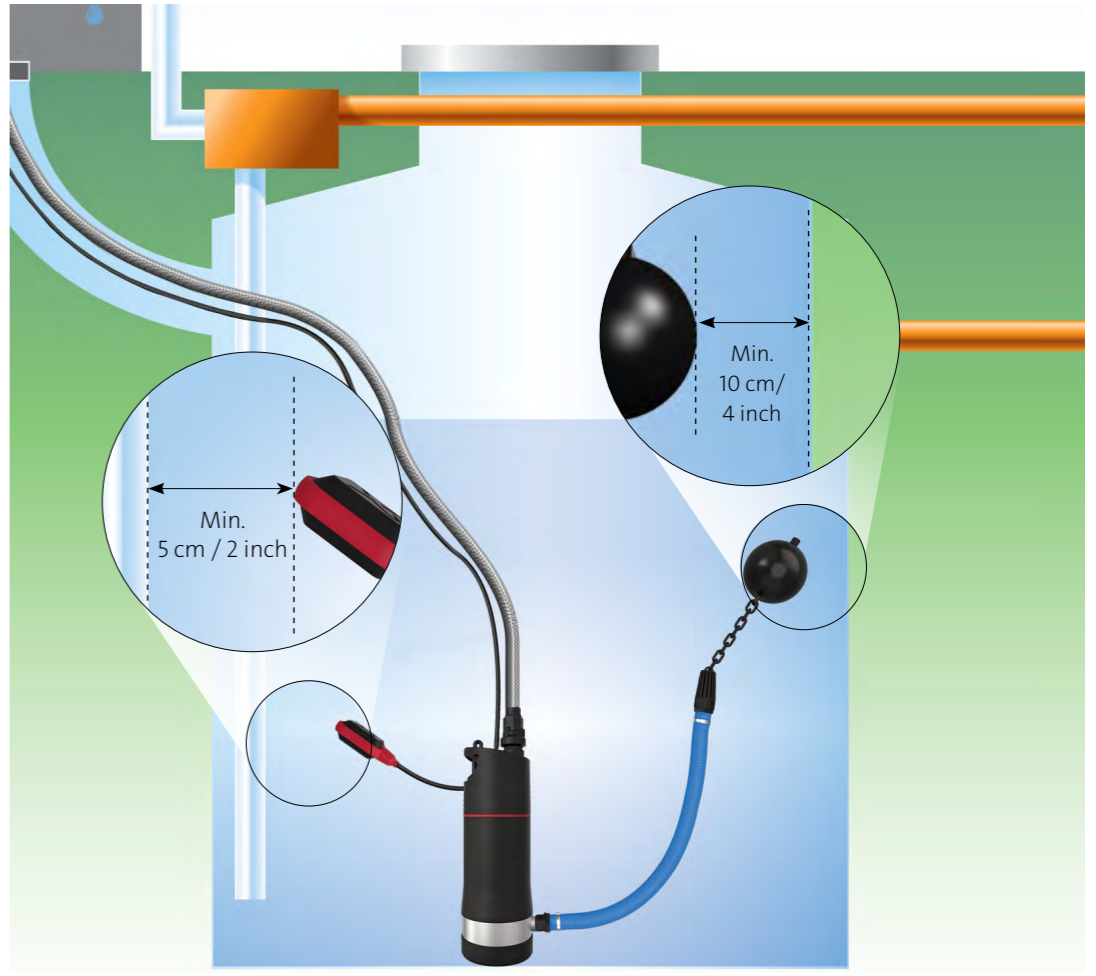
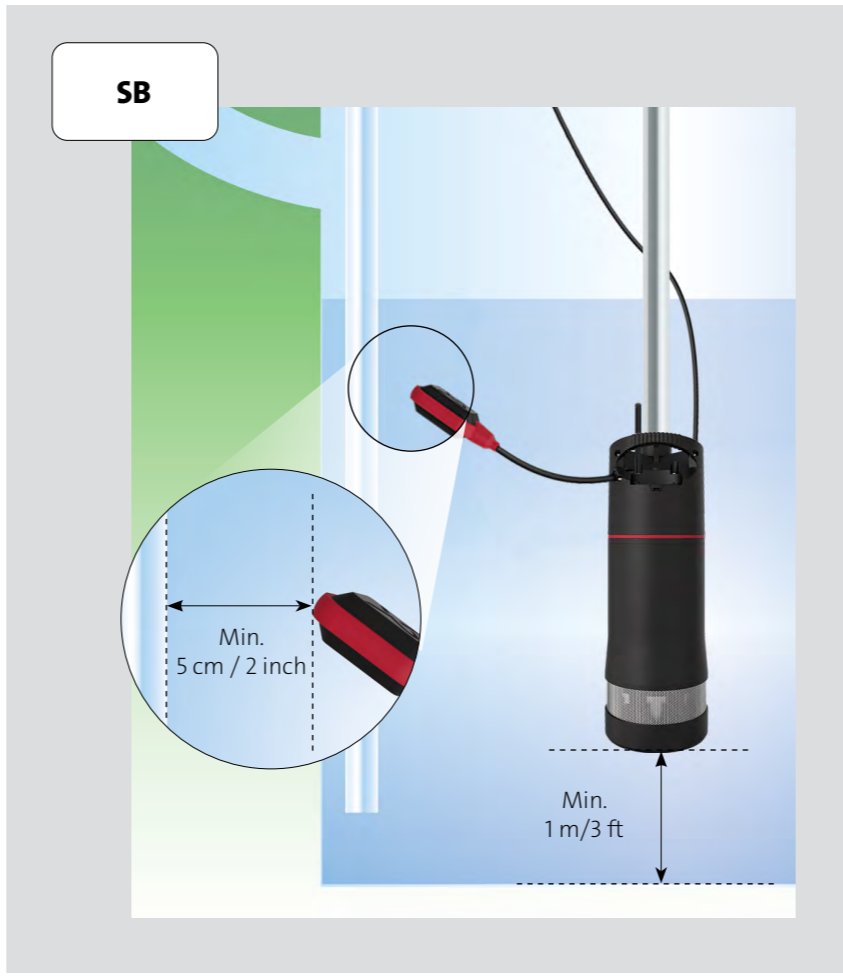
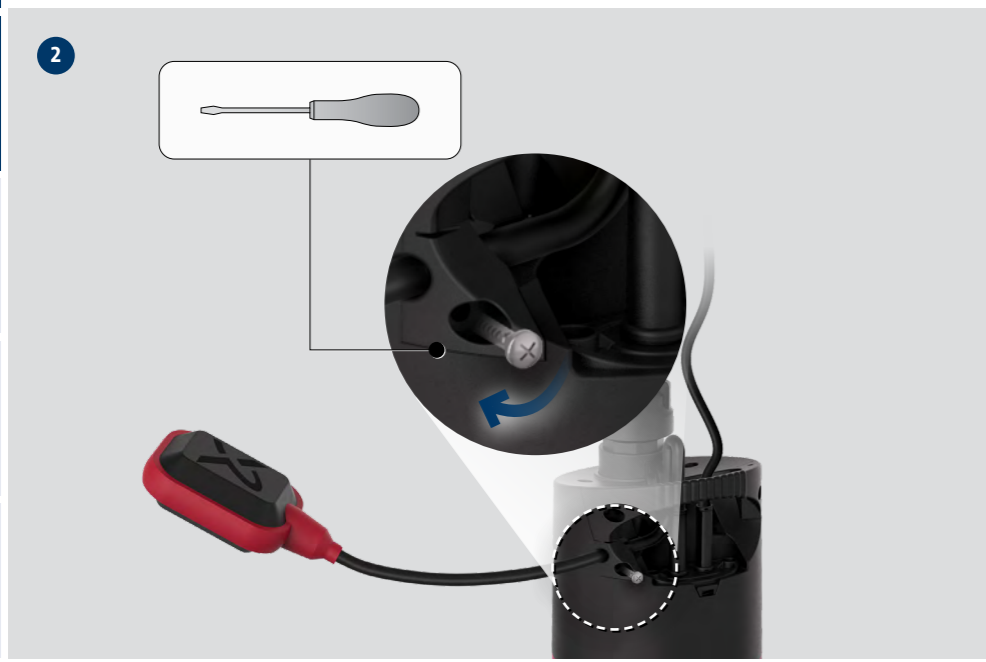
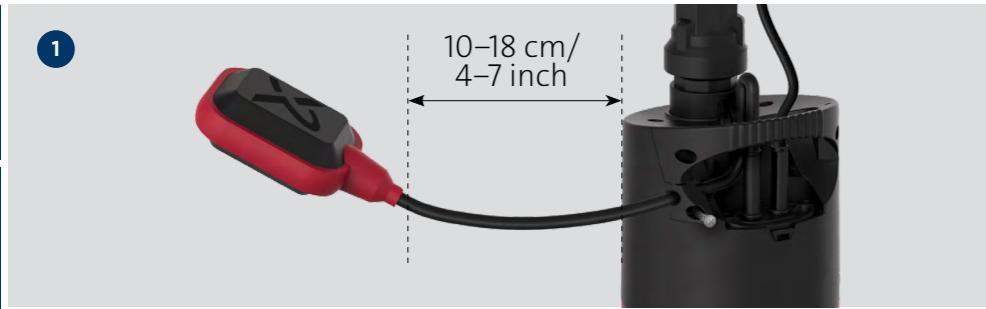
SIDE INLET



**SB**  
**SBA**

**STRAINER**

**SIDE INLET**

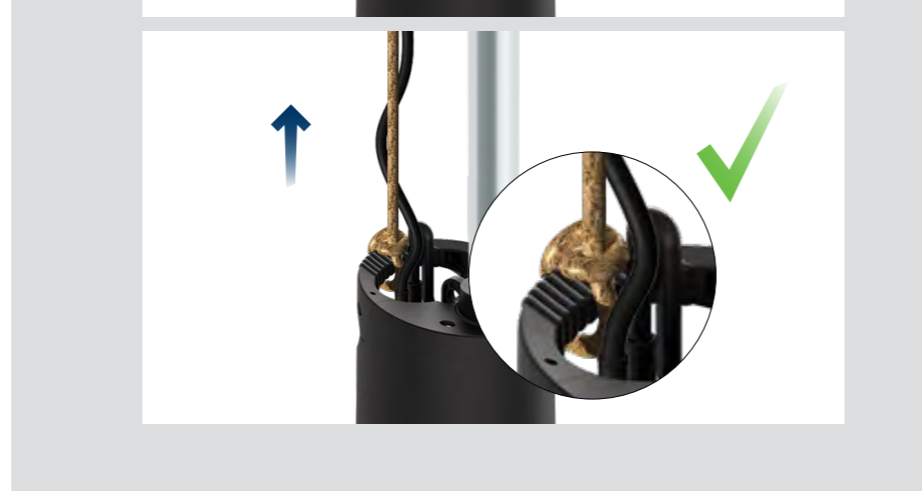
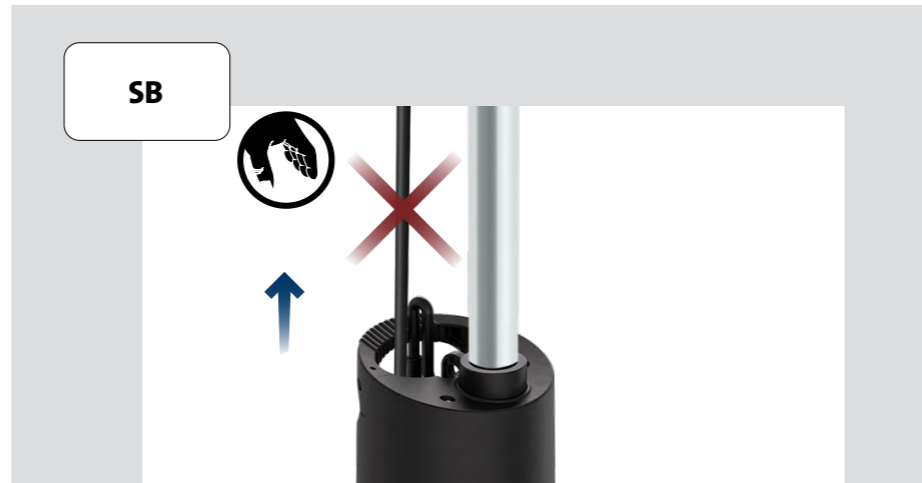
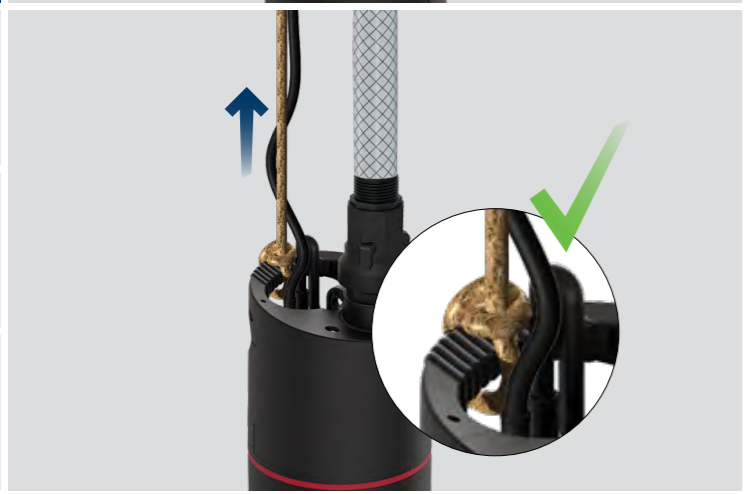


**SB**

**STRAINER**



**SIDE INLET**

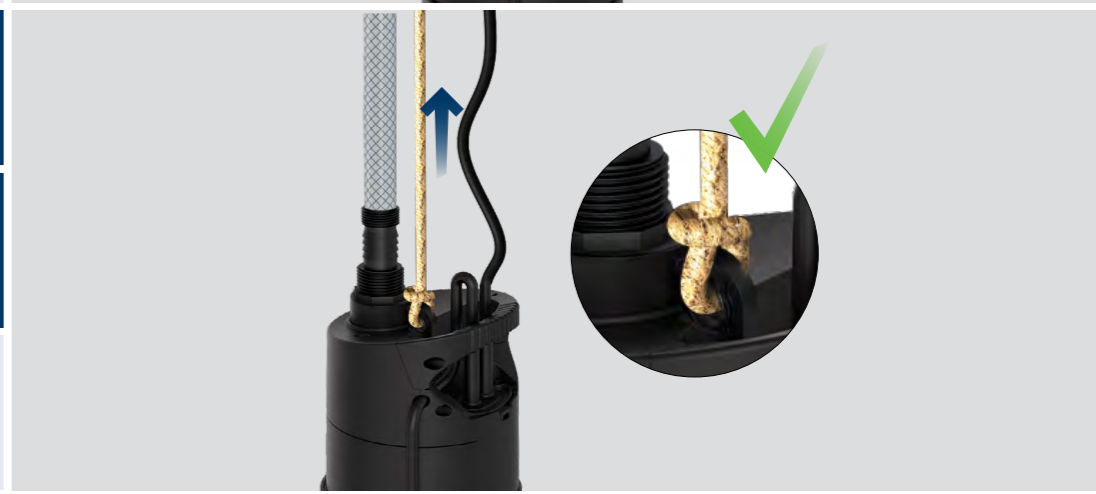
**SBA**

**STRAINER**




**SBA**

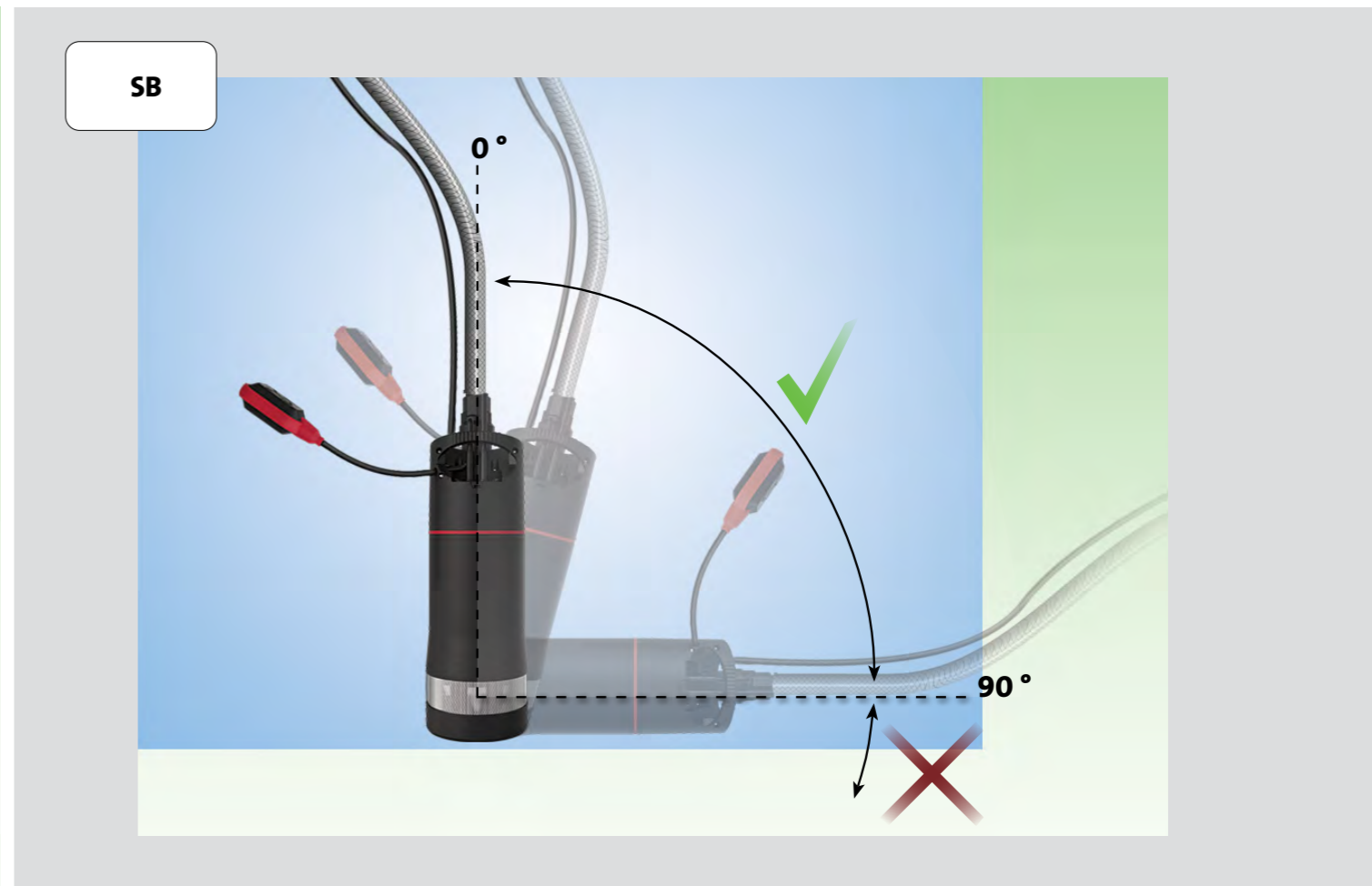
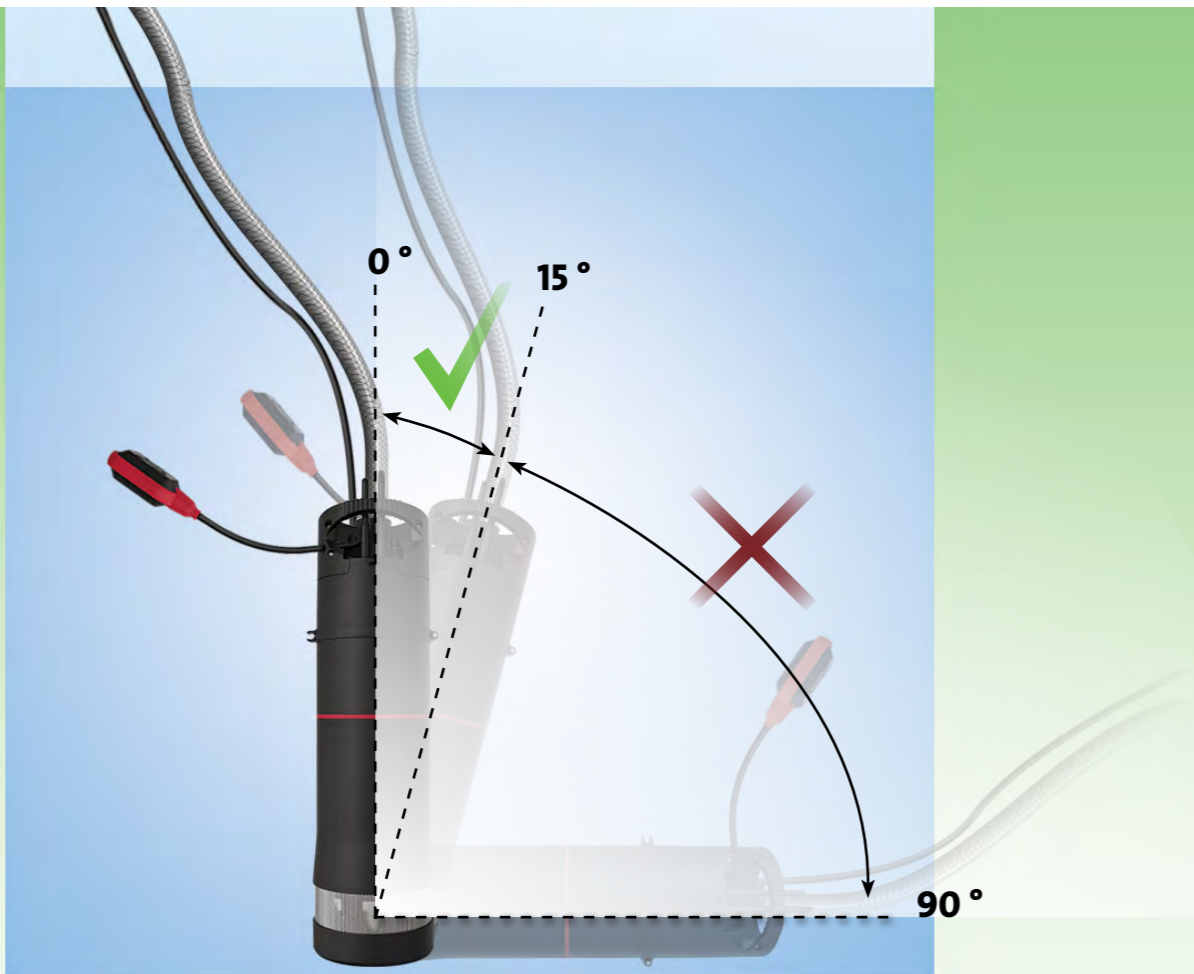
**SIDE INLET**

SB  
SBA

STRAINER

SIDE INLET



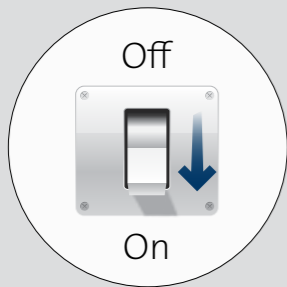
**SB**  
**SBA**

STRAINER

SIDE INLET



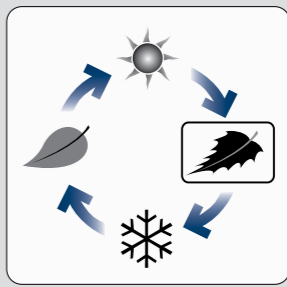
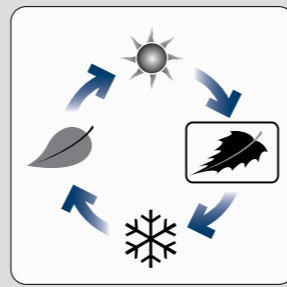
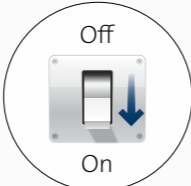
Max. 20 starts per 60 minutes.



**SB**



Max. 30 starts per 60 minutes.





98159397 04.2022
ECM: 1334639

**GRUNDFOS Holding A/S**  
Poul Due Jensens Vej 7  
DK-8850 Bjerringbro  
Tel: +45 87 50 14 00  
[www.grundfos.com](http://www.grundfos.com)



Trademarks displayed in this material, including but not limited to Grundfos and the Grundfos logo are registered trademarks owned by The Grundfos Group. All rights reserved. © 2022 Grundfos Holding A/S. All rights reserved.